



JIGSAW THORNBURY STRATEGIC REVIEW



June 2022

Over the last year the JIGSAW Thornbury team have brought together their passion and expertise for supporting families with children and young people with additional needs and disabilities.

This document captures the unique and brilliant impact of our special charity and lays the foundation for how we will continue to build on our experience to bring benefits to the families we support into the future.

Our thanks goes to each person who played a part in the team effort of setting the course for the future, and to those who will play a part in delivering impact for our families, including our own wonderful team, everyone we work with, and supporters who we couldn't deliver this without.



OUR PURPOSE

For the public benefit, the relief and education, of all children and young people with additional needs or disabilities, aged 0-25 years, and their families by the provision of therapeutic, educational, and stimulating activities, training, and services.



Joining In
Growing Support
Awareness
Wellbeing

Top voted priorities
↓ Isolation
↑ Wellbeing

We need a range of
services for dads

Stakeholders want to see the charity grow in size and reach

Families want more services aimed at
15-25 yr olds

“JIGSAW is without doubt the most important service for myself and my children”

100% of members would recommend JIGSAW to a friend

JIGSAW Thornbury Strategic Review Engagement
The JIGSAW strategic review has been a team effort. We asked staff, volunteers, trustees, children and young people and their families what JIGSAW means to them and where they think we will be in 5 years time. All of this has shaped the strategic review and has come together to create our vision, values and strategic goals.

JIGSAW helps the most with
providing a non-judgemental environment

70% of parents with other children said they also benefitted from JIGSAW services

Our income comes from
Grant/ trusts **74%**
Donations **10%**
Generated **16%**

“JIGSAW is a complete lifeline both to us parents and our children who are dealing with exceptional challenges”

Online services have removed travel barriers

Our volunteer age range is
5-75 years

130 families joined since the start of the pandemic

Training and info sharing empowers families

Young people want to do **more activities in nature**

92% of members said they got the right amount of communication

Find out more and support our cause





Our values

Community

We are a family, working together, and connecting and collaborating with others to create change. We are a respected community hub, providing a welcoming space to have fun and create shared experiences.

Empowerment

We are nurturing and supportive, prioritising wellbeing and empowering people to thrive as themselves. We build skills and confidence in individuals and the community so that they can grow and develop beyond the services we provide.

Compassion

We act with kindness and integrity, caring for and supporting each other in a compassionate and empathetic way. We create relationships based on trust so that everyone can feel valued and respected.

Uniqueness

We respect and celebrate difference, creating an environment where everyone fits in. We listen and respond to individual needs, providing the tools to find strength in uniqueness.

Innovation

We respond to challenges and opportunities in a creative way, harnessing the passion we have for our cause. We are not afraid to try new things and be leaders for change to ensure we remain relevant to people's lives.



What our values look like to the families we support

UNIQUENESS



- Offering something that no one else has
- Valuing others for being special
- Being the one and only you
- Feeling happy as yourself
- Being an individual
- Including people

INNOVATION



- Being creative
- Inventing new things
- Doing things differently
- Making things better over time
- Responding to what other people need
- Solving problems and breaking down barriers



COMMUNITY

- Teamwork
- Helping each other
- Feeling safe and secure
- Teaching people new things
- Making fun memories
- Sharing experiences
- Belonging



COMPASSION

- Understanding how other people feel
- Making sure people are OK
- Supporting each other
- Being generous
- Being tolerant
- Being kind



EMPOWERMENT

- Being confident
- Achieving your goals
- Nothing holding you back
- Asking for the support you need
- Being able to make decisions for yourself
- Give people strength to do what they want to do



Our strategic goals

JIGSAW

Joining In

Supporting families by offering both a safety net and a springboard where too often society does not.

Increasing inclusion by creating a fun environment where uniqueness is celebrated.

Reducing isolation by providing support for the whole family and bringing generations together.

Embracing digital resources to grow our reach and efficiency, so that more people can join in.

Growing Support

Growing support for our organisation and our cause through volunteering opportunities, partnerships, building our membership base, and being part of the wider community.

Generating the finances needed for sustainable growth.

Developing ambassadors by upskilling our members, partners, and the JIGSAW team, and enabling our families to grow their support networks.

Awareness

Raising awareness and enhancing understanding through our training programme for young people, families, and stakeholders in the wider community.

Planning and prioritising communications strategically and linking up with existing awareness campaigns and organisations.

Building reflective practices to support internal growth.

Wellbeing

Promoting wellbeing, independence, self-esteem and fun through everything we do, including the activities we deliver, the products we sell in our shop, and the way we work together as a team.

Valuing the positive impact that nature has on wellbeing by considering the impact of our decisions on the environment and giving our families the skills to do the same.



The future we want to create

Our vision is that children and young people with additional needs or disabilities and their families are empowered to connect, fit in, and thrive as themselves.

Our mission is to support and inform children and young people with additional needs or disabilities and their families, to strengthen their resilience, and raise awareness of their challenges to the wider community to improve inclusion.





Creating impact

MECHANISMS OF CHANGE

Create an **inclusive environment**, provide activities and support for all the family, and **empower** the people we work with to access further opportunities

Provide a base for the **local community**

Embrace **digital resources**

Develop **volunteering opportunities, partnerships, build our membership base**

Generate **sustainable finances**

Upskill members, partners and the JIGSAW team to become **ambassadors**

Deliver a **training programme** for young people, families, and stakeholders in the wider community

Plan and prioritise **communications** strategically and link up with existing awareness campaigns and organisations

Build **internal reflective practices**

Promote **wellbeing, independence, self-esteem and fun** through the activities we deliver, the products we sell in our shop, and the way we work together as a team

Consider the **impact** of our decisions on the **environment** and give young people the skills to do the same

IMPACT FOR YOUNG PEOPLE & FAMILIES

Increased inclusion

Reduced isolation

Increased confidence and self-esteem

Increased connection with nature

Improved wellbeing

Empowerment to access further opportunities

Ability make informed decisions

IMPACT FOR JIGSAW & OUR CAUSE

Increased awareness and enhanced understanding of our cause

Sustainable growth

Bigger, better-connected voice

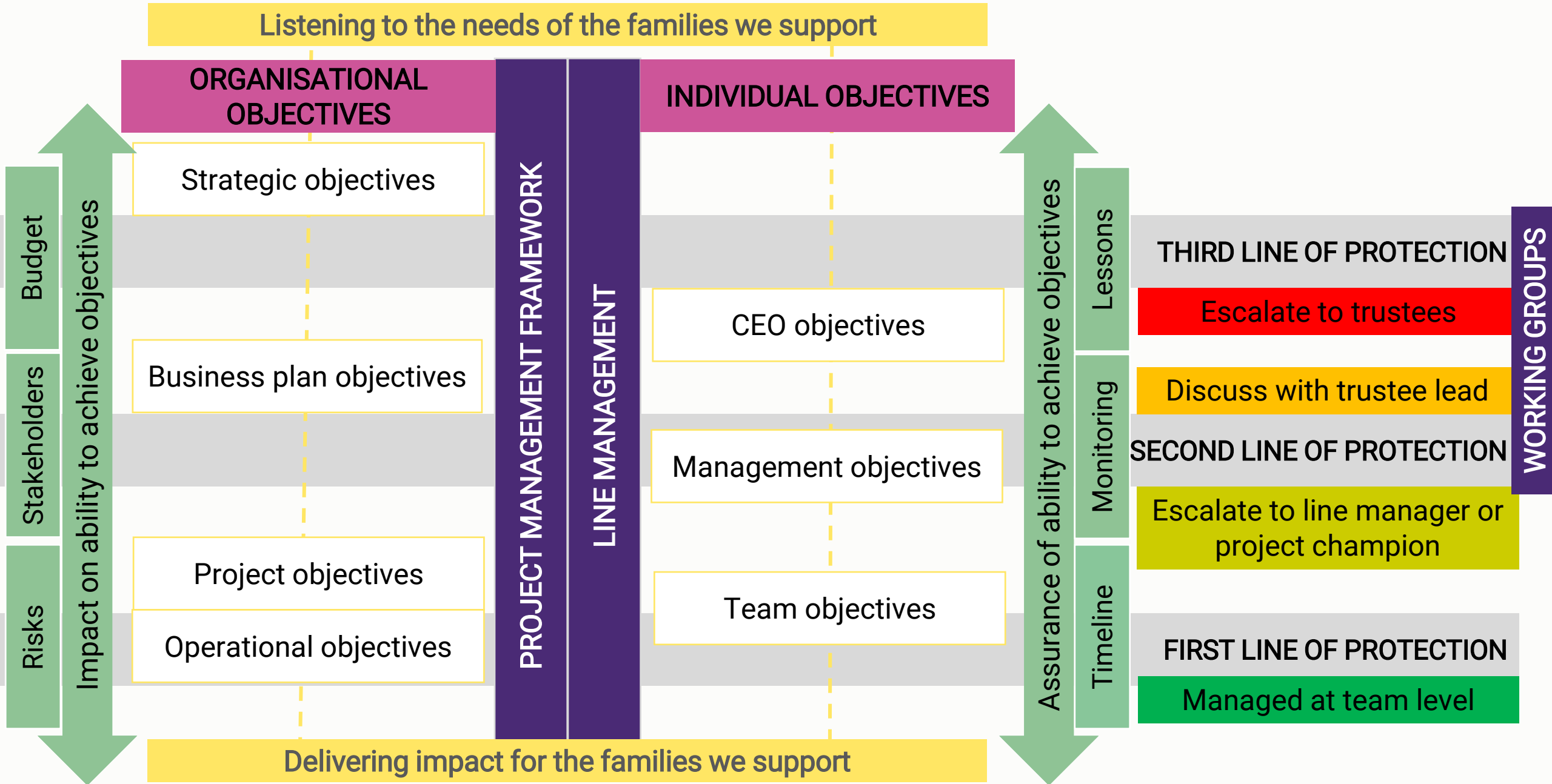
Increased support

Increased respect and recognition

Continual improvement

Increased efficiency

Our governance – Teamwork makes the dream work





Review of existing activities

	JOINING IN	GROWING SUPPORT	AWARENESS	WELLBEING
Afterschool activities	X			
Community engagement		X	X	
Creative wellbeing				X
Events		X		
Forest school				X
Fundraising		X		
Holiday activities				X
Lending Library				X
Music for wellbeing				X
Celebrations				X
Partnerships		X		
Project 5				X
Shop		X		
Support groups	X			
Talks			X	
Training			X	
Young volunteers	X			
Youth club	X			



Home Ed Support Group

St Mary Centre, Thornbury

Thursdays - term time only
1.00 - 2:30pm

£2 per young person

A chance for our home educating members to come together, connect, play and have fun.

Providing important social time for both adults and young people.



Book at www.jigsawthornbury.org.uk/events

New Information Workshops for Parents & Carers



JIGSAW CONNECT

Help JIGSAW support you!
Have your say on what you want to talk about.

<https://www.menti.com/4gh6rx4h6c>

Use the QR, Go here, or use the Link in the text




Developing through the Senses

A six week sensory play based program aimed at pre-school children, teaching you and your child the importance of engaging the sense to support all areas of their growth and development.

Thursday Mornings
9th, 16th, 23rd, 30th June and 7th July
10am - 11.30am



To book:
www.jigsawthornbury.org.uk
Limited spaces



Woodland Wellbeing

£10 per adult

A relaxing, outdoor woodland session for parent & carers to grow support: talk and feel listened to and connect with others.

Monday 16th May
10:00am-12:00pm

Woodland Makery
Tockington BS32 4LQ

Book at www.jigsawthornbury.org.uk/events




Sensory Awareness Training

Do you have a child or young person who can't stay still?
Struggles to hold cutlery or hangs upside down off the sofa?

Event Tickets £15 or with Toolkit: £30 **SAVE**

EARLY BIRD DISCOUNT
£10 on event tickets until 13th May **SAVE**

Thursday 19th & 26th May 10.00am-12pm

Session 1 The sensory system & where things can go wrong
Session 2 Strategies for home, learning & play

Book on to our two part training to help understand sensory difficulties.

Online Group Workshop
Places limited. Please book in advance at www.jigsawthornbury.org.uk/events

Toolkit £99 **SAVE** £21.99




Lets Craft !!

10:30am - 12:00noon
Monday 30th May 2022
15/17 St Mary Centre, Thornbury, BS35 2AB

Design and decorate Ceramic star bunting

Make shrink art Magnets

£15.00 per child

This is a small group session
Craft activity for age 8yrs+





FOCUS GROUPS June 2021 JOINING IN

Digital and evening activities enable more people to join in

SIBLINGS → Separate activities, maybe regular

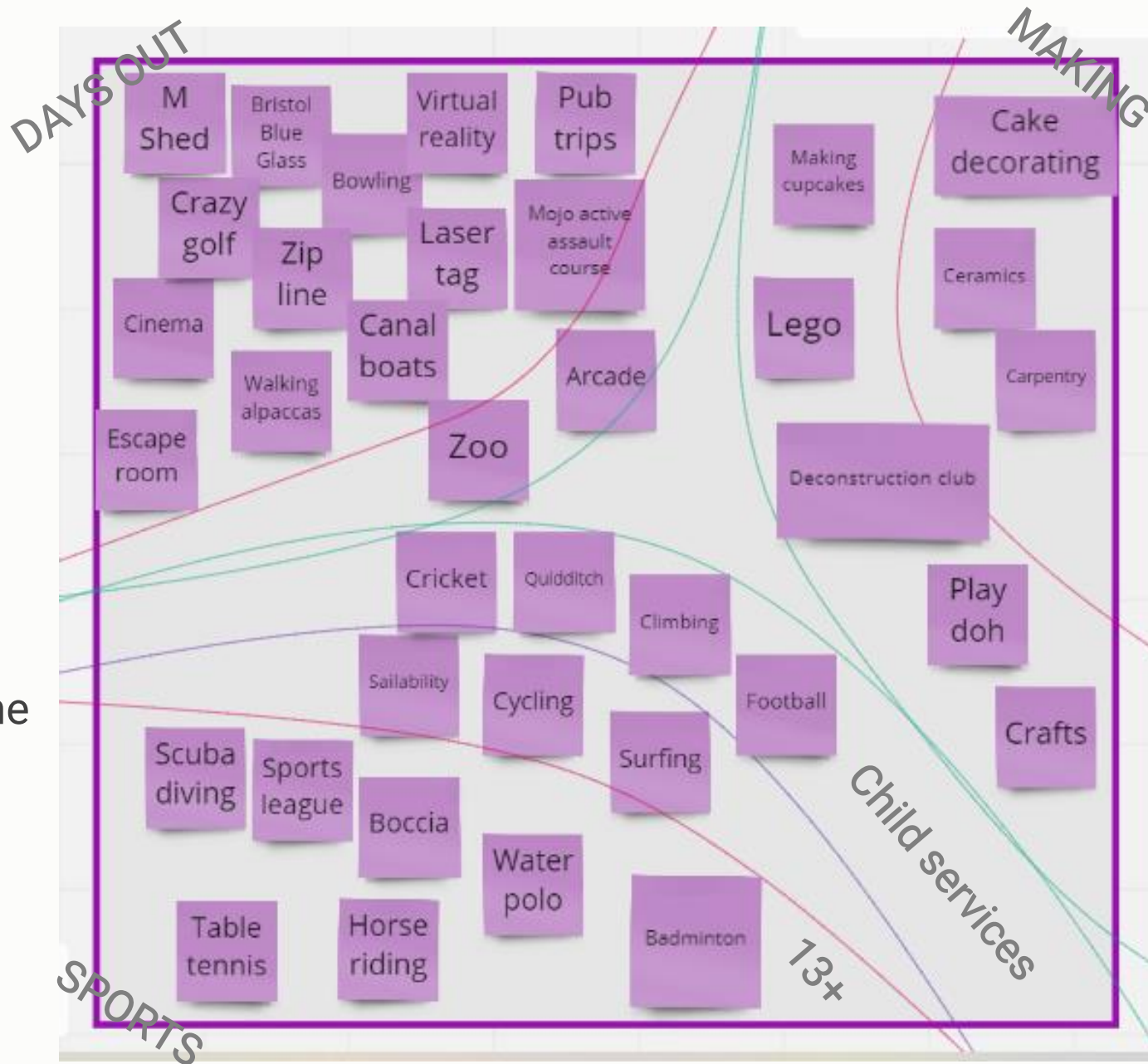
MUMS → Relaxation
→ Crafts and learning new things

DADS → Lads and dads activities
→ Dads only activities that take the focus off talking

Activities with parents nearby to have time together

“Some activities are just for fun, they don’t have to lead anywhere”

“JIGSAW treats everyone the same”







Plans for April 2022 – March 2023: Joining In

Supporting the whole family by offering both a safety net and a springboard and increasing inclusion by creating a fun environment where uniqueness is celebrated.

Growing our reach and bringing people together so that everyone can join in.

Strategic review feedback...

We need a range of
services for dads

100% of members would recommend JIGSAW to a friend

130 families joined during the pandemic

Online services have removed travel barriers

Our plans for 2022/23...

- Continue delivering our core services that empower our families to join in
- Develop online training and awareness webinars that can be accessed from any location, at any time
- Develop services for dads
- Start a group for home educating families
- Re-open our Lending Library with a new online database
- Increase the functionality and accessibility of our venue with a disabled toilet, better storage, and partitioning



FOCUS GROUPS June 2021

GROWING SUPPORT

- Pop up services in different places
- Grow geographical reach
- Growing support for parents with additional needs
- Mutual relationship with the wider community
- Build more relationships with schools
- Map potential partners/ collaborators
- Working with and signposting to other organisations for information, support and training
- Working in partnership to produce a single resource showing where benefits and support change throughout ages



YOUNG VOLUNTEERS



Sofia's story

Sofia has been a JIGSAW Young Volunteer since August 2019. She joined the scheme because she had a friend with a disability.



"I wanted to support people with disabilities and meet people like me as I have anxiety."

JIGSAW Thornbury
YOUNG VOLUNTEERS

WORKING TOGETHER

DEVELOPING A POSITIVE MINDSET

LEARN NEW SKILLS AND INTERESTS

GIVING SOMETHING BACK

CONNECTING WITH OTHERS



JIGSAW Thornbury
YOUNG VOLUNTEERS

It costs us around £3,000 to run our young volunteers service

IF YOU FEEL YOU CAN DONATE TO HELP
KEEP THIS VITAL SERVICE GOING THEN
PLEASE GO TO

www.jigsawthornbury.org.uk/donate/



Plans for April 2022 – March 2023: Growing Support

Growing support for our families and our cause through volunteering opportunities, partnerships, building our membership base, and being part of the wider community. Generating the finances needed for sustainable growth.

Strategic review feedback...

Families want more services aimed at
15-25 yr olds

Stakeholders want to see the charity **grow in size and reach**

Our income comes from
Grant/ trusts **74%**
Donations **10%**
Generated **16%**

Our volunteer age range is
5-75 years

Our plans for 2022/23...

- Increase community fundraising through Join In for JIGSAW, community stalls, and bringing back the JIGSAW Ball for our 10th birthday
- Build relationships to develop services that grow support for young people aged 15-25
- Work with activity providers to secure bespoke offers for our families
- Pilot a new corporate volunteering offer
- Young volunteers scheme getting involved in events and fundraising
- Improve processes and infrastructure around working with others



FOCUS GROUPS June 2021 AWARENESS

Mixed information and social sessions

Understanding
LBTGQ+ and
gender
identification

Support
dads with
accepting
child's needs

Support with
times of
transition and
how to
prepare

How to help
young people
with
relationships

- Better advertising of the Lending Library and what it is
- Clearer communications about activities – age group, quiet or noisy
- Choice of words in advertising activities e.g. Forest 'school' can put young people off
- More communications of positive messages about what people with additional needs and disabilities have achieved

“Empowerment through training and information sharing”

“Increased knowledge and confidence for parents and children and young people”



Plans for April 2022 – March 2023: Awareness

Raising awareness and enhancing understanding with our families and the wider community through training sessions and external communications.

Building in reflective practices to raise our own awareness and support internal growth.

Strategic review feedback...

“JIGSAW is without doubt the most important service for myself and my children”

JIGSAW helps the most with **providing a non-judgemental environment**

Training and info sharing empowers families

92% of members said they got the right amount of communication

Our plans for 2022/23...

- Continue to deliver Project 5, our programme to help young people and parents understand why we get anxious and learn coping strategies
- Work with young people and parents to better understand what makes Project 5 unique
- Run training and awareness sessions for parents and carers
- Pilot a training and awareness session with a local business
- Communicate a clear image of who we are and what is important to us
- Raise awareness through events with the community like Fun Palaces and community stalls



FOCUS GROUPS June 2021 WELLBEING

Spending more time...

In and around

Learning about

Looking after

...nature

- Water & mud play*
- Playing in the woods*
- Creativity*
- Being with friends*
- Bushcraft and survival skills*
- Different activities*
- All ages volunteering together*

JIGSAW is...

Joyful

Happy

Friends

Helpful

Fun



- Hang out sessions
 - Independence and employability
 - Play area with volunteers so that parents can take a break
 - Drop in café for carers of all ages
 - Emotional support
- Giving YP more independence over time



Creative Wellbeing

“It’s a moment in my week to pause, create and connect with fellow folks who know and understand the complicated life I lead. It’s like a breath of fresh air!”



Saturday Family Forest Fun



"Lovely experience, no pressure and everybody very welcoming."

"Such a lovely relaxed morning, with plenty to do and experience."

Parent Feedback





Plans for April 2022 – March 2023: Wellbeing

Promoting wellbeing, independence, self-esteem and fun through everything we do. Valuing the positive impact that nature has on wellbeing and considering the impact of our decisions on the environment.

Strategic review feedback...

“JIGSAW is a complete lifeline both to us parents and our children who are dealing with exceptional challenges”

70% of parents with other children said they also benefitted from JIGSAW services

Young people want to do **more activities in nature**

Top voted priorities
↓ Isolation
↑ Wellbeing

Our plans for 2022/23...

- Start an evening creative wellbeing group
- Offer regular family forest fun and adult woodland wellbeing sessions
- Embed nature-based activities in our core services
- Train volunteer befrienders to help more families access our services that can improve their wellbeing
- Further develop and implement our employee programme for Wellbeing, Inclusion, Support, and Engagement (WISE)
- Focus on capability and capacity to get the best from our team